

Safeline Series

ISO 6150 B GD10500 Safety-Type Quick-Release



Eaton's Safeline Series is an Industrial Interchange pneumatic coupling with push button safety feature designed for use with compressed air. Two-step disconnect procedure shuts off air supply and releases downstream air pressure before plug can be removed from socket/female, which prevents hose whip.

Product Features

- Safe and easy to connect and disconnect
- Light weight, compact ergonomic design
- Accepts 1/4" ISO 6150 Series B and A-A-59439 plugs/males
- Accepts all US industrial plugs/males
- Standard body material: Aluminum
- Standard seal material: Buna-N

Physical Characteristics

Body Size	Nominal Flow Diameter (mm)	Max. Operating Pressure Connected or Disconnected		Air Flow Rate* Δp 0.6 bar/8.7 psi**		Δp 1 bar/14.5 psi***		Working Temperature	
		(bar)	(psi)	(lpm)	(gpm)	(lpm)	(gpm)	°C	°F
1/4	5.5	16	232	525	139	660	174	-20° +100°	-4° +212°

*Indicated values refer to an inlet pressure of 6 bar / 87 psi.

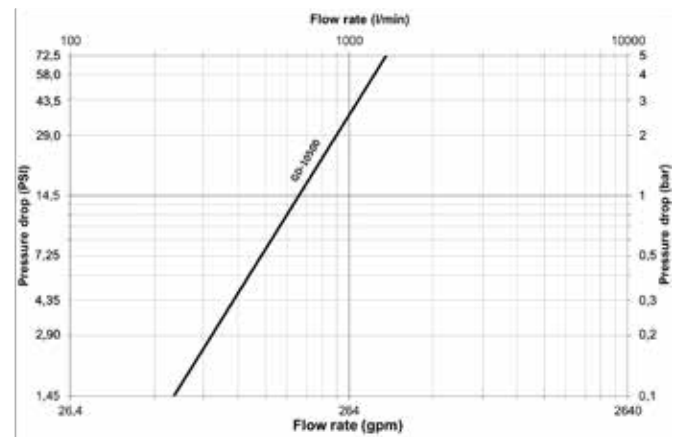
**This flow rate allows the optimum output from a pneumatic tool.

*** This flow rate is the maximum recommended for a suitable output from a pneumatic tool. For applications needing higher flow rates, it is recommended to select a larger size coupling.

Applications & Markets

- General Pneumatics
- Air Tools
- Industrial Plants
- Maintenance and Repair

Flow Data



Air flow-rate at 6 bar (87 psi)

FLUID TRANSFER
AND HYDRAULIC

PNEUMATIC

SPECIAL APPLICATIONS

DIAGNOSTIC

AGRICULTURE

REFRIGERANT

Safeline Series

ISO 6150 B GD10500 Safety-Type Quick-Release

FLUID TRANSFER
AND HYDRAULIC

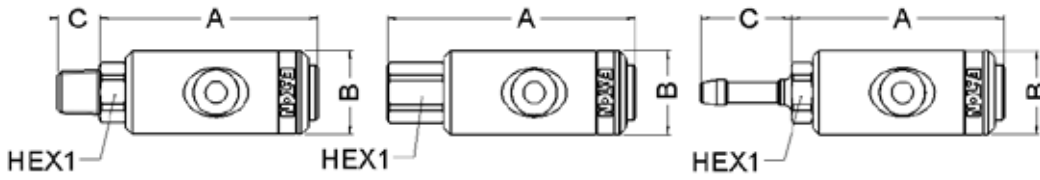


Figure 1

Figure 2

Figure 3

Sockets (Female)

Part Number	Body Size	Port Size	Thread or Hose Diam.	Type	Dimensions							Hex1 Weight				
					Fig.	A (in)	B (in)	C (in)	Hex1 (in)	Hex2 (in)	A (mm)	B (mm)	C (mm)	(lbs)	(g)	
GD1053615		1/4	1/4	Male BSPP	1	2.57	1.02	0.47	0.75		65.3	26.0	12.0	19	0.24	110
GD1053614		1/4	1/4	Male BSPT	1	2.65	1.02	0.51	0.67		67.3	26.0	13.0	17	0.24	109
GD1053641		1/4	1/4	Male NPT	1	2.65	1.02	0.59	0.67		67.2	26.0	15.1	17	0.24	110
GD1053639		3/8	3/8	Male BSPP	1	2.61	1.02	0.47	0.87		66.3	26.0	12.0	22	0.27	124
GD1053638		3/8	3/8	Male BSPT	1	2.65	1.02	0.57	0.67		67.3	26.0	14.5	17	0.26	117
GD1053683		3/8	3/8	Male NPT	1	2.62	1.02	0.60	0.75		66.5	26.0	15.3	19	0.27	121
GD1053613		1/2	1/2	Male BSPP	1	2.69	1.02	0.55	1.06		68.3	26.0	14.0	27	0.33	148
GD1053612		1/2	1/2	Male BSPT	1	2.61	1.02	0.67	0.87		66.3	26.0	17.0	22	0.34	156
GD1053621		1/2	1/2	Male NPT	1	2.61	1.02	0.79	0.87		66.3	26.0	20.0	22	0.30	137
GD1052614	1/4	1/4	1/4	Female BSPP	2	2.33	1.02	0.00	0.67		76.8	26.0		17	0.24	109
GD1052641		1/4	1/4	Female NPT	2	2.33	1.02	0.00	0.67		76.3	26.0		17	0.24	109
GD1052638		3/8	3/8	Female BSPP	2	3.14	1.02	0.00	0.87		79.8	26.0		22	0.29	132
GD1052683		3/8	3/8	Female NPT	2	3.08	1.02	0.00	0.87		78.3	26.0		22	0.29	132
GD1052612		1/2	1/2	Female BSPP	2	3.30	1.02	0.00	1.06		83.8	26.0		27	0.34	155
GD1052621		1/2	1/2	Female NPT	2	3.24	1.02	0.00	1.06		82.3	26.0		27	0.35	157
GD1055667		-	6 mm	Reusable Hose Fit.	3	2.59	1.02	1.10	0.67		65.8	26.0	28.0	17	0.23	106
GD1055678		-	7 mm	Reusable Hose Fit.	3	2.57	1.02	1.10	0.67		65.8	26.0	28.0	17	0.24	107
GD1055689		-	8 mm	Reusable Hose Fit.	3	2.33	1.02	1.10	0.67		65.8	26.0	28.0	17	0.24	107
GD1055690		-	9 mm	Reusable Hose Fit.	3	2.33	1.02	1.10	0.67		65.8	26.0	28.0	17	0.24	108
GD1055601		-	10 mm	Reusable Hose Fit.	3	2.33	1.02	1.10	0.67		65.8	26.0	28.0	17	0.25	112

To obtain connected length of coupling add Dimensions A or A+C (Fig. 1, 2, 3) and D or D+E (Fig. 4, 5, 6, 7, 8) together and subtract 23 mm (0,91 in).

*Alternative end connections available upon request.

PNEUMATIC

SPECIAL APPLICATIONS

DIAGNOSTIC

AGRICULTURE

REFRIGERANT

Safeline Series

ISO 6150 B GD10500 Safety-Type Quick-Release

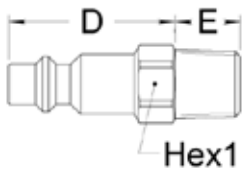


Figure 4

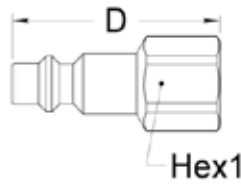


Figure 5

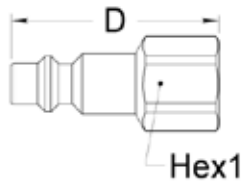


Figure 6

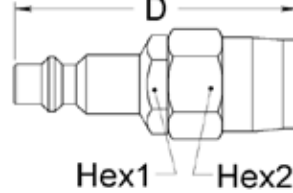


Figure 7

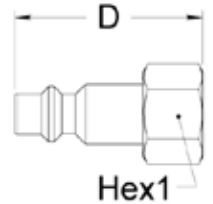


Figure 8

Plugs (Male)

Part Number	Body Size	Port Size	Thread or Hose Diam.	Type	Dimensions			Hex1 (in)	Hex2 (in)	D (mm)	E (mm)	F (mm)	Hex1 (mm)	Hex2 (mm)	Weight	
					Fig.	(in)	(in)								(in)	(lbs)
GA0066318		1/8	1/8-28	Male BSPT	4	1.260	0.354	0.472		32	9		12		0.04189	19
GA0066314		1/4	1/4-19	Male BSPT	4	1.260	0.512	0.551		32	13		14		0.06	25
10		1/4	1/4-18	Male NPT	4	1.220	0.551	0.591		31	14		15		0.06	25
GA0066338		3/8	3/8-19	Male BSPT	4	1.260	0.591	0.669		32	15		17		0.08	38
GA0066345		M14	M14x125	Male Metric	4	1.260	0.512	0.551		32	13		14		0.06	26
GA0066214		1/4	1/4-19	Female BSPP	5	1.732		0.669		44			17		0.07	30
11		1/4	1/4-18	Female NPT	5	1.634		0.709		41.5			18		0.07	30
GA0066238		3/8	3/8-19	Female BSPP	5	1.732		0.827		44			21		0.08	37
GA0066245		M14	M14x125	Female Metric	5	1.732		0.669		44			17		0.06	25
GA0066248	1/4	-	M14x125	Female Metric	5	1.732		0.551		44			14		0.05	24
GA0066767		-	6 mm	Hose Tail	6	1.102	1.024	0.551		28	26	14			0.04	19
GA0066778		-	7 mm	Hose Tail	6	1.102	1.024	0.551		28	26	14			0.04	20
GA0066789		-	8 mm	Hose Tail	6	1.102	1.024	0.551		28	26	14			0.04	20
GA0066790		-	9 mm	Hose Tail	6	1.102	1.024	0.551		28	26	14			0.04	20
GA0066701		-	10 mm	Hose Tail	6	1.102	1.024	0.551		28	26	14			0.05	22
GA0066174		-	7x14 mm	Reusable Hose Fit.	7	2.224		0.630	0.748	56.5			16	19	0.12	56
GA0066184		-	8x14 mm	Reusable Hose Fit.	7	2.224		0.630	0.748	56.5			16	19	0.13	57
GA0066185		-	8x15 mm	Reusable Hose Fit.	7	2.224		0.630	0.748	56.5			16	19	0.12	53
GA0066196		-	9x16 mm	Reusable Hose Fit.	7	2.224		0.630	0.748	56.5			16	19	0.11	51
GA0066814		1/4	1/4-19	Female BSPP Swivel	8	1.496		0.669		38			17		0.06	26
GA0066845		M14	M14x125	Female Metric Swivel	8	1.496		0.669		38			17		0.06	26

To obtain connected length of coupling add Dimensions A or A+C (Fig. 1, 2, 3) and D or D+E (Fig. 4, 5, 6, 7, 8) together and subtract 23 mm (0.91 in).

*Alternative end connections available upon request.

FLUID TRANSFER
AND HYDRAULIC

PNEUMATIC

SPECIAL APPLICATIONS

DIAGNOSTIC

AGRICULTURE

REFRIGERANT

Safeline Series

ISO 6150 B ID10900 Safety-Type Quick-Release



Eaton Gromelle™ ID10900 Series is a single shut-off compressed air coupling that incherchanges with ISO 6150 C Standards requirements. Nominal diameter is 8 mm. Thanks to a distinct two-movement action, our couplings guarantee operator safety at disconnection by eliminating the “whiplash” effect. It is a must-have for safe air applications.

Product Features

- One-hand push-to-connect
- Automatic button for disconnection
- Meets safety standard ISO 4414
- Single shut-off valving
- Good flow capacity
- Wide selection of end connections
- Standard seal material: NBR (Nitrile)
- Standard body material (Female): Aluminum
- Standard body material (Male): Zinc plated steel

Physical Characteristics

Body Size	Nominal Flow Diameter (mm)	Max. Operating Pressure Connected or Disconnected		Air Flow Rate* Δp 0.6 bar/8.7 psi**		Δp 1 bar/14.5 psi***		Working Temperature	
		(bar)	(psi)	(lpm)	(gpm)	(lpm)	(gpm)	°C	°F
3/8	8	16	232	1,590	420	2,000	528	-20° +100°	-4° +212°

*Indicated values refer to an inlet pressure of 6 bar / 87 psi.

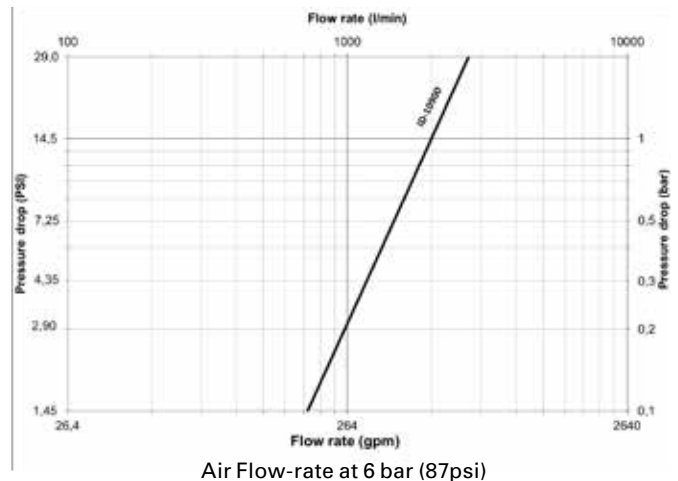
**This flow rate allows the optimum output from a pneumatic tool.

*** This flow rate is the maximum recommended for a suitable output from a pneumatic tool. For applications needing higher flow rates, it is recommended to select a larger size coupling.

Applications & Markets

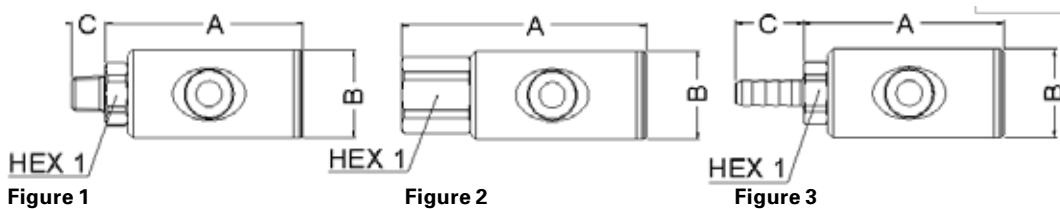
- General Pneumatics
- Air Tools

Flow Data



Safeline Series

ISO 6150 B ID10900 Safety-Type Quick-Release



Sockets (Female)

Part Number	Body Size	Port Size	Thread or Hose Diam.	Type	Fig.	Dimensions									
						A	B	C	Hex1	A	B	C	Hex1	Weight	
						(in)	(in)	(in)	(in)	(mm)	(mm)	(mm)	(mm)	(lbs)	(g)
ID1096015		1/4	1/4	Male BSPP	1	3.0	1.3	0.5	0.87	76.2	34	11.9	22	0.47	214
ID1096014		1/4	1/4	Male BSPT	1	3.0	1.3	0.5	0.87	76.1	34	13	22	0.47	213
ID1096041		1/4	1/4	Male NPT	1	3.0	1.3	0.5	0.87	76	34	13	22	0.47	213
ID1096039		3/8	3/8	Male BSPP	1	3.0	1.3	0.5	0.87	76.20	34	11.9	22	0.48	218
ID1096038		3/8	3/8	Male BSPT	1	3.0	1.3	0.6	0.87	76.1	34	15	22	0.48	219
ID1096083		3/8	3/8	Male NPT	1	3.0	1.3	0.6	0.87	76.1	34	15	22	0.48	219
ID1096013		1/2	1/2	Male BSPP	1	3.0	1.3	0.5	1.06	76.2	34	13.9	27	0.52	238
ID1096012		1/2	1/2	Male BSPT	1	3.0	1.3	0.7	0.87	76.1	34	17	22	0.51	233
ID1096021		1/2	1/2	Male NPT	1	3.0	1.3	0.7	0.87	76.1	34	17	22	0.51	233
ID1097014	3/8	1/4	1/4	Female BSPP	2	3.5	1.3	-	0.87	88.1	34	-	22	0.51	233
ID1097041		1/4	1/4	Female NPT	2	3.5	1.3	-	0.87	88.10	34	-	22	0.51	233
ID1097038		3/8	3/8	Female BSPP	2	3.6	1.3	-	0.87	90.60	34	-	22	0.51	232
ID1097083		3/8	3/8	Female NPT	2	3.6	1.3	-	0.87	90.6	34	-	22	0.51	232
ID1097012		1/2	1/2	Female BSPP	2	3.7	1.3	-	1.06	94.1	34	-	27	0.59	267
ID1097021		1/2	1/2	Female NPT	2	3.7	1.3	-	1.06	94.1	34	-	27	0.59	269
ID1095678		-	7 mm	Hose Tail	3	3.0	1.3	1.1	0.87	77.1	34	28	22	0.47	215
ID1095689		-	8 mm	Hose Tail	3	3.0	1.3	1.1	0.87	77.1	34	28	22	0.48	216
ID1095690		-	9 mm	Hose Tail	3	3.0	1.3	1.1	0.87	77.1	34	28	22	0.48	218
ID1095601		-	10 mm	Hose Tail	3	3.0	1.3	1.1	0.87	77.1	34	28	22	0.48	219

To obtain connected length of coupling add dimensions A or A+C (Fig. 1, 2, 3) and D or D+E (Fig. 4, 5, 6) together and subtract 25,6 mm (1 in.).

*Alternative end connections available upon request.

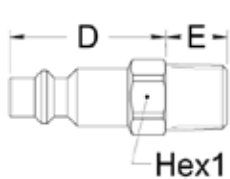


Figure 4

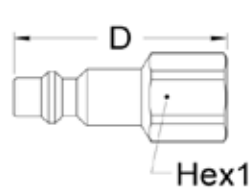


Figure 5



Figure 6

Plugs (Male)

Part Number	Body Size	Port Size	Thread or Hose Diam.	Type	Fig.	Dimensions									
						D	E	F	Hex1	D	E	F	Hex1	Weight	
						(in)	(in)	(in)	(in)	(mm)	(mm)	(mm)	(mm)	(lbs)	(g)
IA0090614		1/4	1/4	Male BSPT	4	1.34	0.51	-	0.63	34.00	13.00	-	16.00	0.07	32.00
IA0090638		3/8	3/8	Male BSPT	4	1.42	0.59	-	0.67	36.00	15.00	-	17.00	0.09	41.00
IA0090612		1/2	1/2	Male BSPT	4	1.57	0.67	-	0.91	40.00	17.00	-	23.00	0.12	56.00
IA0090714		1/4	1/4	Female BSPP	5	1.97	-	-	0.67	50.00	-	-	17.00	0.08	38.00
IA0090738		3/8	3/8	Female BSPP	5	1.97	-	-	0.83	50.00	-	-	21.00	0.11	49.00
IA0090712	3/8	1/2	1/2	Female BSPP	5	2.09	-	-	1.02	53.00	-	-	26.00	0.15	69.00
IA0090978		-	7 mm	Hose Tail	6	1.30	1.02	0.63	-	33.00	26.00	16.00	-	0.07	30.00
IA0090989		-	8 mm	Hose Tail	6	1.30	1.02	0.63	-	33.00	26.00	16.00	-	0.07	30.00
IA0090990		-	9 mm	Hose Tail	6	1.30	1.02	0.63	-	33.00	26.00	16.00	-	0.07	31.00
IA0090901		-	10 mm	Hose Tail	6	1.30	1.02	0.63	-	33.00	26.00	16.00	-	0.07	32.00
IA0090912		-	11-12 mm	Hose Tail	6	1.30	1.22	0.63	-	33.00	31.00	16.00	-	0.08	38.00

To obtain connected length of coupling add dimensions A or A+C (Fig. 1, 2, 3) and D or D+E (Fig. 4, 5, 6) together and subtract 25,6 mm (1 in.).

*Alternative end connections available upon request.

FLUID TRANSFER
AND HYDRAULIC

PNEUMATIC

SPECIAL APPLICATIONS

DIAGNOSTIC

AGRICULTURE

REFRIGERANT

Safeline Series

ISO 6150 C GD18500/GK18600

FLUID TRANSFER
AND HYDRAULIC

PNEUMATIC

SPECIAL APPLICATIONS

DIAGNOSTIC

AGRICULTURE

REFRIGERANT



Eaton's Safeline Series is an Industrial Interchange pneumatic coupling with push button safety feature designed for use with compressed air. Two-step disconnect procedure shuts off air supply and releases downstream air pressure before plug can be removed from socket/female, which prevents hose whip.

Product Features

- Safe and easy to connect and disconnect
 - Light weight, compact ergonomic design
 - Meets Safety Standard ISO 4414
 - Meets ISO 6150 Series C Standard
 - Standard body material: Dural
- Standard seal material: Buna-N

Physical Characteristics

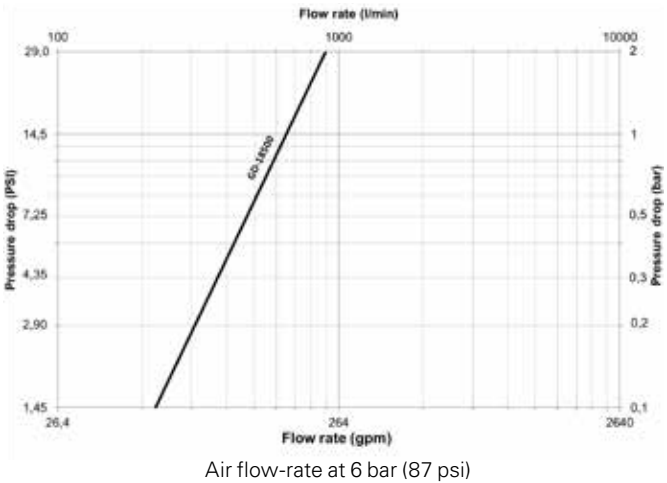
Body Size	Nominal Flow Diameter (mm)	Max. Operating Pressure Connected or Disconnected		Air Flow Rate* Δp 0.6 bar/8.7 psi**				Working Temperature	
		(bar)	(psi)	(lpm)	(gpm)	(lpm)	(gpm)	°C	°F
1/4	5.5	16	232	515	136	650	172	-20° +100°	-4° +212°

*Indicated values refer to an inlet pressure of 6 bar / 87 psi.
 **This flow rate allows the optimum output from a pneumatic tool.
 *** This flow rate is the maximum recommended for a suitable output from a pneumatic tool. For applications needing higher flow rates, it is recommended to select a larger size coupling.

Applications & Markets

- General Pneumatics
- Air Tools
- Industrial Plants
- Maintenance and Repair

Flow Data



Safeline Series

ISO 6150 C GD18500/GK18600

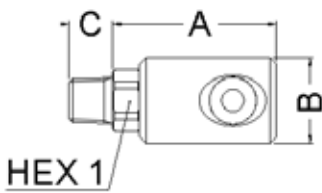


Figure 1

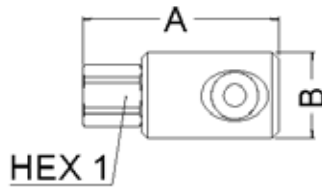


Figure 2

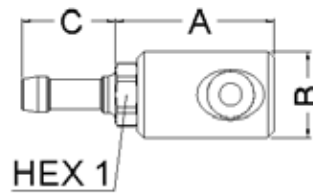


Figure 3

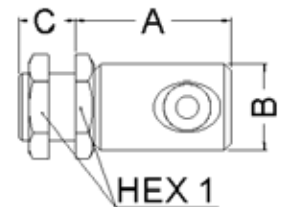


Figure 4

Sockets (Female)

Part Number	Body Size	Port Size	Thread or Hose Diam.	Type	Fig.	Dimensions			Hex1 (in)	A (mm)	B (mm)	C (mm)	Hex1 (mm)	Weight	
						A (in)	B (in)	C (in)						(lbs)	(g)
GD1853615		1/4	1/4	Male BSPP	1	1.85	1.02	0.47	0.75	47	26	12	19	0.17	77
GD1853614		1/4	1/4	Male BSPT	1	1.93	1.02	0.51	0.67	49	26	13	17	0.17	76
GD1853639		3/8	3/8	Male BSPP	1	1.89	1.02	0.47	0.87	48	26	12	22	0.20	91
GD1853638		3/8	3/8	Male BSPT	1	1.93	1.02	0.57	0.67	49	26	14.5	17	0.19	84
GD1853613		1/2	1/2	Male BSPP	1	1.97	1.02	0.55	1.06	50	26	14	27	0.25	115
GD1853612		1/2	1/2	Male BSPT	1	1.89	1.02	0.67	0.87	48	26	17	22	0.27	123
GD1852614		1/4	1/4	Female BSPP	2	2.30	1.02		0.67	58.5	26	-	17	0.17	76
GD1852638	1/4	3/8	3/8	Female BSPP	2	2.42	1.02		0.87	61.5	26	-	22	0.22	99
GD1852612		1/2	1/2	Female BSPP	2	2.58	1.02		1.06	65.5	26	-	27	0.27	122
GD1855667		-	6 mm	Hose Tail	3	1.87	1.02	1.10	0.67	47.5	26	28	17	0.16	73
GD1855678		-	7 mm	Hose Tail	3	1.87	1.02	1.10	0.67	47.5	26	28	17	0.16	74
GD1855689		-	8 mm	Hose Tail	3	1.87	1.02	1.10	0.67	47.5	26	28	17	0.16	74
GD1855690		-	9 mm	Hose Tail	3	1.87	1.02	1.10	0.67	47.5	26	28	17	0.17	75
GD1855601		-	10 mm	Hose Tail	3	1.87	1.02	1.10	0.67	47.5	26	28	17	0.17	79
GD1855613		-	13 mm	Hose Tail	3	1.87	1.02	1.30	0.67	47.5	26	33	17	0.19	87
GD1855014		1/4	1/4	Female BSPP, Bulkhead*	4	1.83	1.02	0.67	1.06	46.5	26	17	27	0.25	112
GD1855038		3/8	3/8	Female BSPP, Bulkhead**	4	1.87	1.02	0.79	1.26	47.5	26	20	32	0.33	150

To obtain connected length of coupling add Dimensions A or A+C (Fig. 1, 2, 3, 4) and D or D+E (Fig. 5, 6, 7) together and subtract 26 mm (1,02 in).

*Max bulkhead thickness: 10 mm (0,39 in) / Bulkhead hole diameter = 21 mm (0,83 in).

**Max bulkhead thickness: 12 mm (0,47 in) / Bulkhead hole diameter = 25 mm (0,98 in).

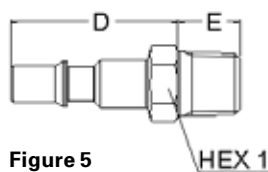


Figure 5

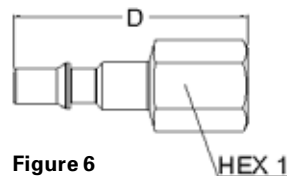


Figure 6

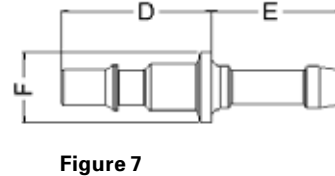


Figure 7

Plugs (Male)

Part Number	Body Size	Port Size	Thread or Hose Diam.	Type	Fig.	Dimensions			Hex1 (in)	Hex2 (in)	D (mm)	E (mm)	F (mm)	Hex1 (mm)	Hex2 (mm)	Weight	
						D (in)	E (in)	F (in)								(lbs)	(g)
GK1866319		1/8	1/8	Male BSPP	5	1.38	0.31		0.55		35	8		14		0.04	17
GK1866318		1/8	1/8	Male BSPT	5	1.34	0.31		0.47		34	8		12		0.03	14
GK1866381		1/8	1/8	Male NPT	5	1.34	0.39		0.47		34	10		12		0.03	15
GK1866315		1/4	1/4	Male BSPP	5	1.42	0.47		0.67		36	12		17		0.06	25
GK1866314		1/4	1/4	Male BSPT	5	1.40	0.51		0.55		35.5	13		14		0.05	23
GK1866341		1/4	1/4	Male NPT	5	1.42	0.59		0.67		36	15		17		0.07	30
GK1866339		3/8	3/8	Male BSPP	5	1.46	0.47		0.87		37	12		22		0.09	39
GK1866338		3/8	3/8	Male BSPT	5	1.48	0.47		0.75		37.5	12		19		0.08	37
GK1866218		1/8	1/8	Female BSPP	6				0.55		41.5			14		0.04	18
GK1866281	1/4	1/8	1/8	Female NPT	6				0.00							0.04	18
GK1866214		1/4	1/4	Female BSPP	6				0.67		50			17		0.07	33
GK1866241		1/4	1/4	Female NPT	6				0.67		50			17		0.07	32
GK1866238		3/8	3/8	Female BSPP	6				0.83		47			21		0.08	35
GK1866245		M 14	M 14 x 125	Female Metric	6				0.67		47.5			17		0.06	26
GK1866767		-	6 mm	Hose Tail	7		1.26	1.10	0.59		32	28	15			0.03	15
GK1866778		-	7 mm	Hose Tail	7		1.26	1.10	0.59		32	28	15			0.04	18
GK1866789		-	8 mm	Hose Tail	7		1.26	1.10	0.59		32	28	15			0.04	19
GK1866790		-	9 mm	Hose Tail	7		1.26	1.10	0.59		32	28	15			0.04	19
GK1866701		-	10 mm	Hose Tail	7		1.26	1.10	0.59		32	28	15			0.04	20
GK1866713		-	13 mm	Hose Tail	7		1.26	1.30	0.79		32	33	20			0.08	34

To obtain connected length of coupling add Dimensions A or A+C (Fig. 1, 2, 3, 4) and D or D+E (Fig. 5, 6, 7) together and subtract 26 mm (1,02 in).

FLUID TRANSFER
AND HYDRAULIC

PNEUMATIC

SPECIAL APPLICATIONS

DIAGNOSTIC

AGRICULTURE

REFRIGERANT

Safeline Series

ISO 6150 C ID18900/IK18900

FLUID TRANSFER
AND HYDRAULIC

PNEUMATIC

SPECIAL APPLICATIONS

DIAGNOSTIC

AGRICULTURE

REFRIGERANT



Eaton's Safeline Series is an Industrial Interchange pneumatic coupling with push button safety feature designed for use with compressed air. Two-step disconnect procedure shuts off air supply and releases downstream air pressure before plug can be removed from socket/female, which prevents hose whip.

Product Features

- Safe and easy to connect and disconnect
- Light weight, compact ergonomic design
- Meets Safety Standard ISO 4414
- Meets ISO 6150 Series C Standard
- Standard body material: Dural
- Standard seal material: Buna-N

Physical Characteristics

Body Size	Nominal Flow Diameter (mm)	Max. Operating Pressure Connected or Disconnected		Air Flow Rate* Δp 0.6 bar/8.7 psi**				Working Temperature	
		(bar)	(psi)	(lpm)	(gpm)	(lpm)	(gpm)	°C	°F
3/8	8	16	232	1,080	285	1,350	356	-20° +100°	-4° +212°

*Indicated values refer to an inlet pressure of 6 bar / 87 psi.

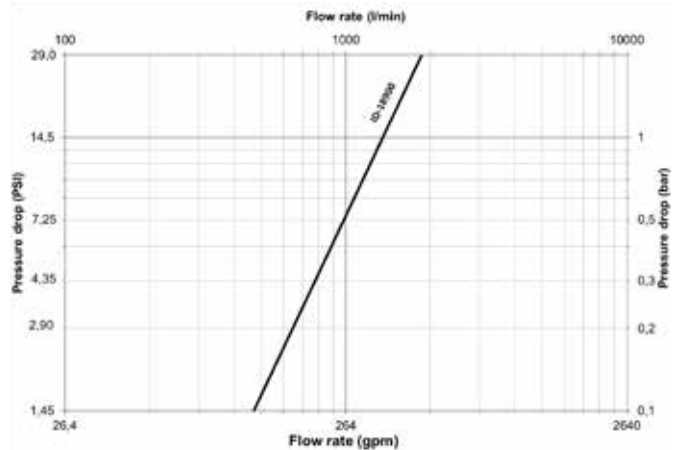
**This flow rate allows the optimum output from a pneumatic tool.

*** This flow rate is the maximum recommended for a suitable output from a pneumatic tool. For applications needing higher flow rates, it is recommended to select a larger size coupling.

Applications & Markets

- General Pneumatics
- Air Tools
- Industrial Plants
- Maintenance and Repair

Flow Data



Air flow-rate at 6 bar (87 psi)

Safeline Series

ISO 6150 CID18900/IK18900

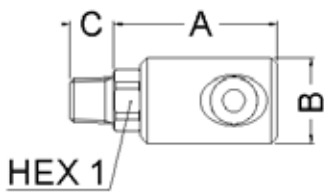


Figure 1

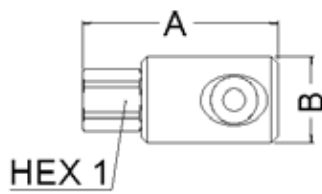


Figure 2

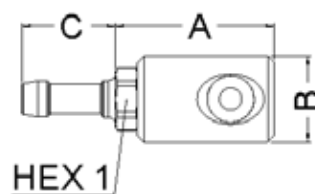


Figure 3

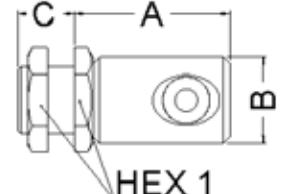


Figure 4

Sockets (Female)

Part Number	Body Size	Port Size	Thread or Hose Diam.	Type	Fig.	Dimensions							Weight		
						A	B	C	Hex1	A	B	C		Hex1	
						(in)	(in)	(in)	(in)	(mm)	(mm)	(mm)	(mm)	(lbs)	(g)
ID1896015		1/4	1/4	Male BSPP	1	2.45	1.34	0.47	0.87	62	34	12	22	0.35	160
ID1896014		1/4	1/4	Male BSPT	1	2.45	1.34	0.51	0.87	62	34	13	22	0.36	162
ID1896039		3/8	3/8	Male BSPP	1	2.45	1.34	0.47	0.87	62	34	12	22	0.36	165
ID1896038		3/8	3/8	Male BSPT	1	2.45	1.34	0.59	0.87	62	34	15	22	0.37	168
ID1896013		1/2	1/2	Male BSPP	1	2.45	1.34	0.55	1.06	62	34	14	27	0.37	168
ID1896012		1/2	1/2	Male BSPT	1	2.45	1.34	0.67	0.87	62	34	17	22	0.40	180
ID1897014		1/4	1/4	Female BSPP	2	2.92	1.34	-	0.87	74	34	-	22	0.40	182
ID1897038	3/8	3/8	3/8	Female BSPP	2	3.02	1.34	-	0.87	77	34	-	22	0.40	180
ID1897012		1/2	1/2	Female BSPP	2	3.16	1.34	-	1.06	80	34	-	27	0.48	216
ID1895689		-	8 mm	Hose Tail	3	2.49	1.34	1.10	0.87	63	34	28	22	0.36	165
ID1895690		-	9 mm	Hose Tail	3	2.49	1.34	1.10	0.87	63	34	28	22	0.35	160
ID1895601		-	10 mm	Hose Tail	3	2.49	1.34	1.10	0.87	63	34	28	22	0.37	166
ID1895613		-	13 mm	Hose Tail	3	2.49	1.34	1.30	0.87	63	34	33	22	0.39	177
ID1895038		3/8	3/8	Female BSPP, Bulkhead*	4	2.37	1.34	0.79	1.26	60	34	20	32	0.52	235
ID1895012		1/2	3/8	Female BSPP, Bulkhead**	4	2.39	1.34	0.91	1.38	61	34	23	35	0.59	269

To obtain connected length of coupling add Dimensions A or A+C (Fig. 1, 2, 3, 4) and D or D+E (Fig. 5, 6, 7) together and subtract 40 mm (1,57 in).

*Max bulkhead thickness: 12 mm (0,47 in) / Bulkhead hole diameter = 25 mm (0,98 in)

**Max bulkhead thickness: 15 mm (0,59 in) / Bulkhead hole diameter = 31 mm (1,22 in)

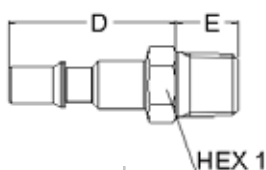


Figure 5

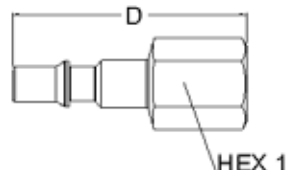


Figure 6

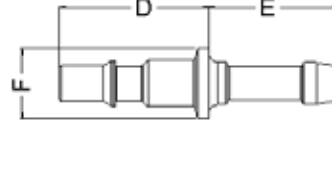


Figure 7

Plugs (Male)

Part Number	Body Size	Port Size	Thread or Hose Diam.	Type	Fig.	Dimensions							Weight		
						D	E	F	Hex1	D	E	F		Hex1	
						(in)	(in)	(in)	(in)	(mm)	(mm)	(mm)	(mm)	(lbs)	(g)
IK1890615		1/4	1/4	Male BSPP	5	1.81	0.47	0.75	0.75	46	12	-	19	0.10	44
IK1890614		1/4	1/4	Male BSPT	5	1.77	0.51	0.67	0.67	45	13	-	17	0.08	38
IK1890641		1/4	1/4	Male NPT	5	1.77	0.51	0.67	0.67	45	13	-	17	0.09	39
IK1890639		3/8	3/8	Male BSPP	5	1.81	0.47	0.87	0.87	46	12	-	22	0.11	51
IK1890638		3/8	3/8	Male BSPT	5	1.77	0.59	0.75	0.75	45	15	-	19	0.11	51
IK1890683		3/8	3/8	Male NPT	5	1.77	0.59	0.75	0.75	45	15	-	19	0.11	52
IK1890613		1/2	1/2	Male BSPP	5	1.81	0.55	1.02	1.02	46	14	-	26	0.16	73
IK1890612	3/8	1/2	1/2	Male BSPT	5	1.77	0.67	0.87	0.87	45	17	-	22	0.15	66
IK1890714		1/4	1/4	Female BSPP	6	2.36	-	0.67	0.67	60	-	-	17	0.09	40
IK1890741		1/4	1/4	Female NPT	6	2.36	-	0.67	0.67	60	-	-	17	0.09	40
IK1890738		3/8	3/8	Female BSPP	6	2.36	-	0.83	0.83	60	-	-	21	0.11	52
IK1890783		3/8	3/8	Female NPT	6	2.36	-	0.83	0.83	60	-	-	21	0.12	55
IK1890712		1/2	1/2	Female BSPP	6	2.36	-	1.02	1.02	60	-	-	26	0.15	66
IK1890989		-	8 mm	Hose Tail	7	1.65	1.10	0.63	0.63	42	28	16	-	0.07	33
IK1890990		-	9 mm	Hose Tail	7	1.65	1.10	0.63	0.63	42	28	16	-	0.07	33
IK1890901		-	10 mm	Hose Tail	7	1.65	1.10	0.63	0.63	42	28	16	-	0.08	35
IK1890913		-	13 mm	Hose Tail	7	1.65	1.30	0.79	0.79	42	33	20	-	0.10	46

To obtain connected length of coupling add Dimensions A or A+C (Fig. 1, 2, 3, 4) and D or D+E (Fig. 5, 6, 7) together and subtract 40 mm (1,57 in).

FLUID TRANSFER
AND HYDRAULIC

PNEUMATIC

SPECIAL APPLICATIONS

DIAGNOSTIC

AGRICULTURE

REFRIGERANT

Safeline Series

ISO 6150 C TD18300/TK18300

FLUID TRANSFER
AND HYDRAULIC

PNEUMATIC

SPECIAL APPLICATIONS

DIAGNOSTIC

AGRICULTURE

REFRIGERANT



Eaton's Safeline Series is an Industrial Interchange pneumatic coupling with push button safety feature designed for use with compressed air. Two-step disconnect procedure shuts off air supply and releases downstream air pressure before plug can be removed from socket/female, which prevents hose whip.

Product Features

- Safe and easy to connect and disconnect
- Light weight, compact ergonomic design
- Meets Safety Standard ISO 4414
- Meets ISO 6150 Series C Standard
- Standard body material: Dural
- Standard seal material: Buna-N

Physical Characteristics

Body Size	Nominal Flow Diameter (mm)	Max. Operating Pressure Connected or Disconnected		Air Flow Rate* Δp 0.6 bar/8.7 psi**				Working Temperature	
		(bar)	(psi)	(lpm)	(gpm)	(lpm)	(gpm)	°C	°F
1/2	11	16	232	2,400	634	3,000	793	-20° +100°	-4° +212°

*Indicated values refer to an inlet pressure of 6 bar / 87 psi.

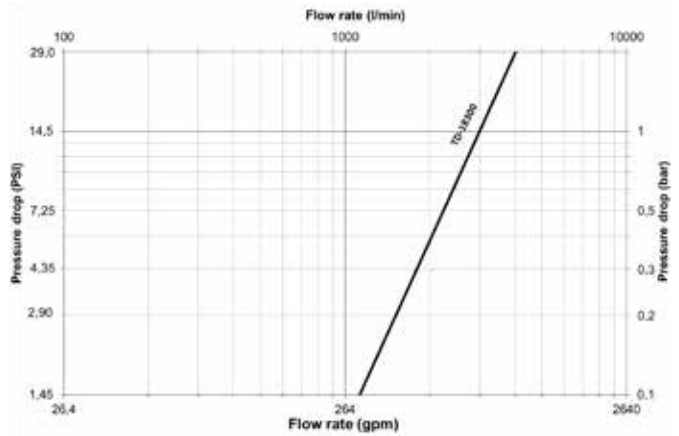
**This flow rate allows the optimum output from a pneumatic tool.

** This flow rate is the maximum recommended for a suitable output from a pneumatic tool. For applications needing higher flow rates, it is recommended to select a larger size coupling.

Applications & Markets

- General Pneumatics
- Air Tools
- Industrial Plants
- Maintenance and Repair

Flow Data



Air flow-rate at 6 bar (87 psi)

Safeline Series

ISO 6150 C TD18300/TK18300

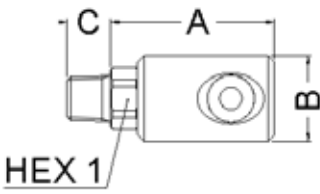


Figure 1

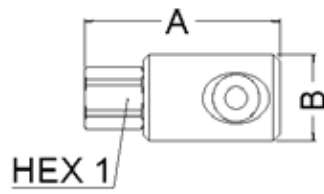


Figure 2

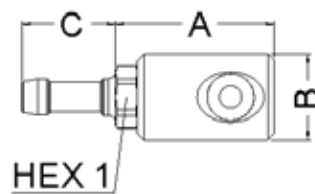


Figure 3

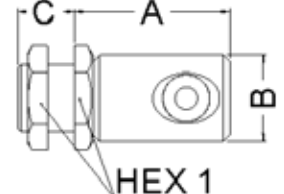


Figure 4

Sockets (Female)

Part Number	Body Size	Port Size	Thread or Hose Diam.	Type	Fig.	Dimensions										Weight	
						A	B	C	Hex1	Hex2	A	B	C	Hex1	Hex2	(lbs)	(g)
TD1832012		1/2	1/2	Male BSPT	1	2.78	1.56	0.67	1.06		70.6	39.5	17	27		0.58	262
TD1832034		3/4	3/4	Male BSPT	1	2.78	1.56	0.73	1.14		70.6	39.5	19	29		0.63	287
TD1832138		3/8	3/8	Female BSPP	2	3.27	1.56		1.06		83.1	39.5	-	27		0.62	280
TD1832112		1/2	1/2	Female BSPP	2	3.27	1.56		1.06		83.1	39.5	-	27		0.58	261
TD1832134	1/4	3/4	3/4	Female BSPP	2	3.51	1.56		1.26		89.1	39.5	-	32		0.67	304
TD1835601		-	10 mm	Hose Tail	3	2.84	1.56	1.10	1.06		72.1	39.5	28	27		0.56	256
TD1835613		-	13 mm	Hose Tail	3	2.84	1.56	1.30	1.06		72.1	39.5	33	27		0.59	267
TD1835616		-	16 mm	Hose Tail	3	2.84	1.56	1.30	1.06		72.1	39.5	33	27		0.60	270
TD1835012		1/2	1/2	Female BSPP, Bulkhead*	4	2.78	1.56	0.91	1.38		70.6	39.5	23	35		0.76	343
TD1835034		3/4	3/4	Female BSPP, Bulkhead**	4	2.82	1.56	0.98	1.50		71.6	39.5	25	38		0.77	350

To obtain connected length of coupling add Dimensions A or A+C (Fig. 1, 2, 3, 4) and D or D+E (Fig. 5, 6, 7) together and subtract 20 mm (0,79 in).

*Max bulkhead thickness: 15 mm (0,59 in) / Bulkhead hole diameter = 31 mm (1,22 in)

**Max bulkhead thickness: 16 mm (0,63 in) / Bulkhead hole diameter = 33 mm (1,30 in)

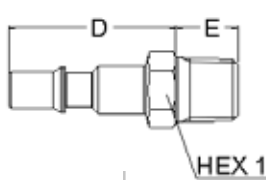


Figure 5

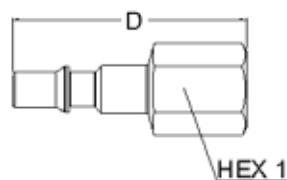


Figure 6

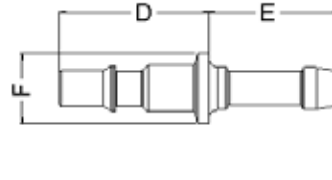


Figure 7

Plugs (Male)

Part Number	Body Size	Port Size	Thread or Hose Diam.	Type	Fig.	Dimensions							Weight		
						D	E	F	Hex1	D	E	F	Hex1	(lbs)	(g)
TK1831539		3/8	3/8	Male BSPP	5	2.01	0.47	0.87	0.87	51.1	11.9		22	2.32	59
TK1831512		1/2	1/2	Male BSPT	5	1.97	0.67	0.87	0.87	50	17		22	2.56	65
TK1831534		3/4	3/4	Male BSPT	5	2.11	0.73	1.14	1.14	53.5	18.5		29	3.86	98
TK1831638		3/8	3/8	Female BSPP	6	2.56			1.02	65			26	3.70	94
TK1831612	1/4	1/2	1/2	Female BSPP	6	2.56			1.02	65			26	3.02	77
TK1831634		3/4	3/4	Female BSPP	6	2.87			1.26	73			32	5.02	128
TK1831889		-	8 mm	Hose Tail	7	1.85	1.10	0.79		47	28	20		1.87	48
TK1831801		-	10 mm	Hose Tail	7	1.85	1.10	0.79		47	28	20		1.91	48
TK1831813		-	13 mm	Hose Tail	7	1.85	1.30	0.79		47	33	20		2.19	56
TK1831816		-	16 mm	Hose Tail	7	1.85	1.30	0.79		47	33	20		2.40	61

To obtain connected length of coupling add Dimensions A or A+C (Fig. 1, 2, 3, 4) and D or D+E (Fig. 5, 6, 7) together and subtract 20 mm (0,79 in).

FLUID TRANSFER AND HYDRAULIC

PNEUMATIC

SPECIAL APPLICATIONS

DIAGNOSTIC

AGRICULTURE

REFRIGERANT

CC Series

FLUID TRANSFER
AND HYDRAULIC



Eaton's CC Series provides unrestricted air flow, safety, efficiency, and extreme durability all in one pneumatic coupling.

Product Features

- Two sleeve activation for safety
- Safe choice for employees due to safety venting that prevents hose whip
- External polymer construction prevents scratches on finished surfaces
- Accepts multiple plug/male configurations, making it extremely flexible
- Standard body material: Nickel plated brass internal body with polymer outer sleeves

PNEUMATIC

Physical Characteristics

Series	Body Size	Max. Operating Pressure		Min. Burst Pressure		Rated Flow	
	(in)	(bar)	(psi)	(bar)	(psi)	(lpm)	(gpm)
2CC	1/4	17	250	138	2,000	962	254
3CC	3/8	17	250	138	2,000	1,699	448
24CC	1/4	17	250	138	2,000	1,500	396

SPECIAL APPLICATIONS

Applications & Markets

- General Pneumatics
- Air Tools

Interchangeability

2CC	24CC	3CC
Industrial	CEJN 320	Industrial
ARO 210	RECTUS 25	ARO 310
Tru-Flate		

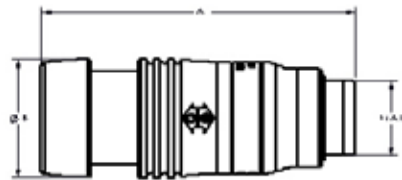
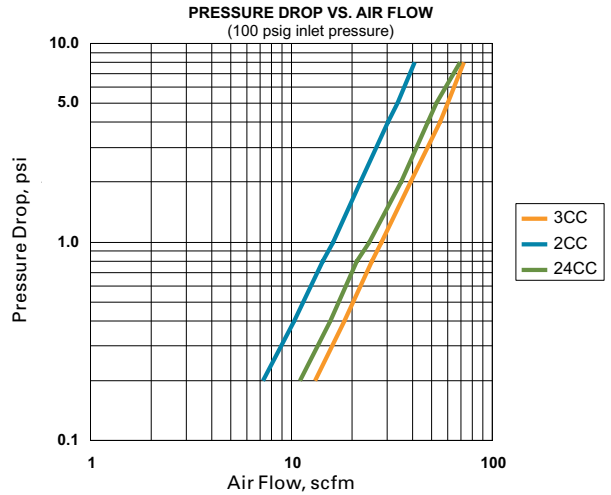


Figure 1

Flow Data



DIAGNOSTIC

AGRICULTURE

Part Number	Coupling Type	Body Size	Thread	Type	Fig.	Dimensions					
						A (in)	B (in)	Hex (in)	A (mm)	B (mm)	Hex (mm)
2CC25F	Socket/Female	1/4	1/4	Female NPTF	1	2.64	1.188	0.75	67.06	30.18	19.05
2CC37F	Socket/Female	1/4	3/8	Female NPTF	1	2.84	1.188	0.75	72.14	30.18	19.05
3CC25F	Socket/Female	3/8	1/4	Female NPTF	1	2.68	1.188	0.75	68.07	30.18	19.05
3CC37F	Socket/Female	3/8	3/8	Female NPTF	1	2.88	1.188	0.75	73.15	30.18	19.05
3CC50F	Socket/Female	3/8	1/2	Female NPTF	1	3.36	1.188	0.875	85.34	30.18	22.23
3CC25FBS	Socket/Female	1/4	1/4	Female BSPP	1	2.88	1.188	0.75	73.15	30.18	19.05
3CC37FBS	Socket/Female	3/8	3/8	Female BSPP	1	2.88	1.188	0.75	73.15	30.18	19.05
24CC25F	Socket/Female	1/4	1/4	Female NPTF	1	2.64	1.188	0.75	67.06	30.18	19.05
24CC37F	Socket/Female	1/4	3/8	Female NPTF	1	2.84	1.188	0.75	72.14	30.18	19.05
24CC25FBS	Socket/Female	1/4	1/4	Female BSPP	1	2.84	1.188	0.75	72.14	30.18	19.05

REFRIGERANT